

Martin Kull
+372 520 2303
Standard AS
Marja 9, 10617 Tallinn

Teie 17.05.2021

Meie 01.06.2021

Test Report

Page: 1	Pages: 2
Producer:	Standard AS
Product:	Side chair VIPSI
Grounds of testing:	Order for testing 17.05.2021
Testing objective:	Determination of strength, durability and stability of seat.
Test methods:	EVS-EN 16139:2013 Furniture - Strength, durability and safety - Requirements for non-domestic seating. Level 1 EVS-EN 1728:2012 Furniture. Seating. Test methods for the determination of strength and durability EVS-EN 1022:2018 Domestic furniture - Seating - Determination of stability

Product description

Bent plywood (11 mm) chair with metal legs. On the top of the chair back is a solidwood detail, extending the width of the chair back. Height of seat is 460 mm, height of chair back 870 mm, width at the seat front edge 450 mm and depth of seat 400 mm.



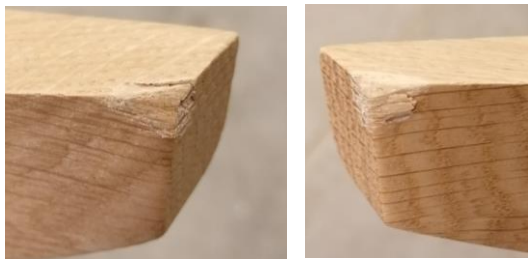
Determination of strength and durability of seat

Test results

Test	Clause of standard	Loads on tested parts	Number of cycles	Test results
Forwards overturning	EN 1022 7.3.1	Vertical load 600 N Horizontal load 20 N	1	Unit is stable.
Corner stability test	EN 1022 7.3.3	300 N	1	Unit is stable.
Sideways overturning, all seating without arm rests	EN 1022 7.3.4	Vertical load 600 N Horizontal load 20 N	1	Unit is stable.
Rearwards overturning, all seating with back rests	EN 1022 7.3.6	Vertical load 600 N Horizontal load 154 N	1	Unit is stable.
Seat and back static load test	EN 1728 6.4	Seat 1600 N Back 560 N	10	No damages or visible defects.
Seat front edge static load test	EN 1728 6.5	Force 1300 N	10	No damages or visible defects.
Vertical static load on back	EN 1728 6.6	Back 600 N Seat load 1300 N	10	No damages or visible defects.
Seat and back durability test	EN 1728 6.17	Seat 1000 N Back 300 N	100000	No damages or visible defects.
Seat front edge durability test	EN 1728 6.18	Force 800 N	50000	No damages or visible defects.
Leg forward static load test	EN 1728 6.15	Force 400 N Seat load 1000 N	10	No damages or visible defects. See remark 1.
Leg sideways static load test	EN 1728 6.16	Force 400 N Seat load 1000 N	10	No damages or visible defects.
Seat impact test	EN 1728 6.24	Drop height: 240 mm	10	No damages or visible defects.
Back impact test	EN 1728 6.25	Height of fall, ° : 38	10	See remark 2.

Remark:

1. Chair overturned at 500 N. Forces reduced to 400 N to prevent overturning.
2. Minor visible damages to solidwood detail edge from impacting the floor after overturning.



3. Results are valid only for tested product.

(signed digitally)

Jaan Kers

Head of Laboratory

Laboratory of Wood Technology

Department of Material and Environmental Technology