



## ENDLESS

ENDLESS is a remarkable smart room divider that redefines traditional storage and space division in modern work environments. Developed by Standard, this multifunctional container system combines the practicality of a cabinet with the flexibility and visual appeal of a contemporary interior element - making it a true statement piece in any office layout.


Unlike ordinary storage units, ENDLESS breaks the monotony with its modular and customizable design, allowing users to create unique combinations that reflect their specific functional needs and aesthetic preferences. Whether used as a space divider, a storage unit, or even a visual accent, ENDLESS offers nearly limitless possibilities.

The modular system allows various elements to be stacked or arranged side by side, enabling the creation of dynamic layouts - from low, open consoles to tall, semi-transparent partitions. Modules can include open shelves, closed cabinets, or display niches, offering both storage and zoning functionalities.

ENDLESS is ideal for open-plan offices where it's important to balance collaboration with privacy. It helps structure the space while maintaining a sense of openness, and its sleek design ensures that the divider itself becomes an integral part of the interior concept - not just a functional necessity.

With ENDLESS, your workspace evolves with your needs - intelligently, beautifully, and without limits.

### FINISHES

FACADE								BODY, INNER SHELVES	
MELAMINE								MELAMINE	
									
White	Beige	Light Grey	Green	Dark Grey	Dark Walnut	Oak	Light Oak	White	
ACOUSTIC PANELS								RACK, FLOWER BOX	FACADE STRIP
FELT								METAL	METAL
									
V01 Grey	V02 Black	V03 Beige	V04 Green Grey					RAL9005 Black	42 455 Gold

### CUSTOMIZABLE FACADE

DESIGNED TO HARMONIZE WITH ITS SURROUNDING ENVIRONMENT



### OPTIONAL ACCENT STRIP

REFINED DETAIL THAT ADDS CONTRAST AND SOPHISTICATION





6 DIFFERENT FACADES

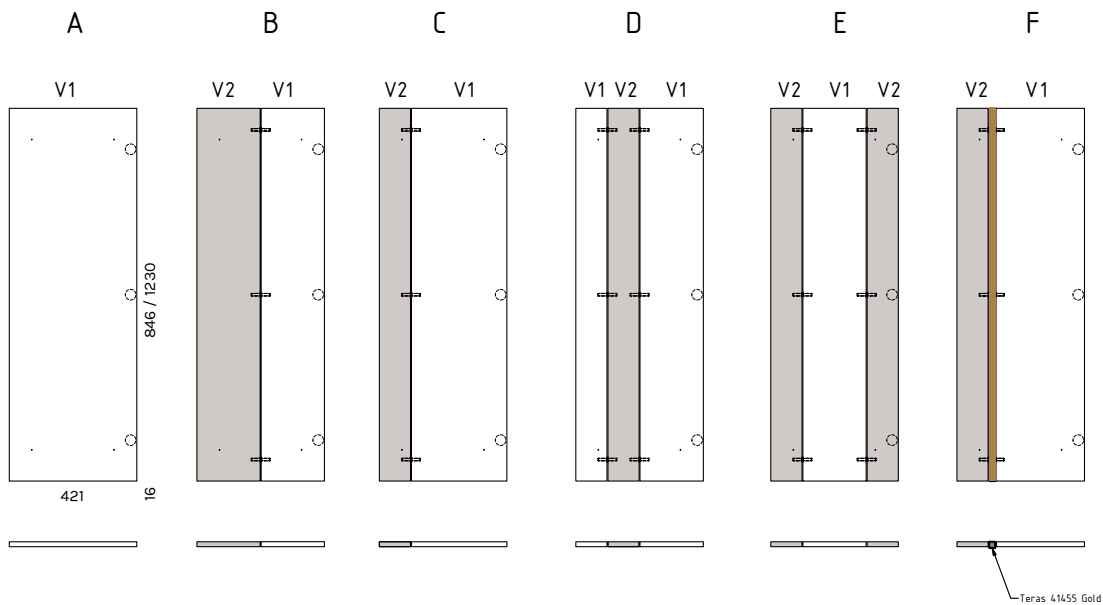
LOWER FACADE KIT

EN-FS2-A / 846X421  
EN-FS2-B / 846X421  
EN-FS2-C / 846X421  
EN-FS2-D / 846X421  
EN-FS2-E / 846X421  
EN-FS2-F / 846X421

LOWER FACADE KIT

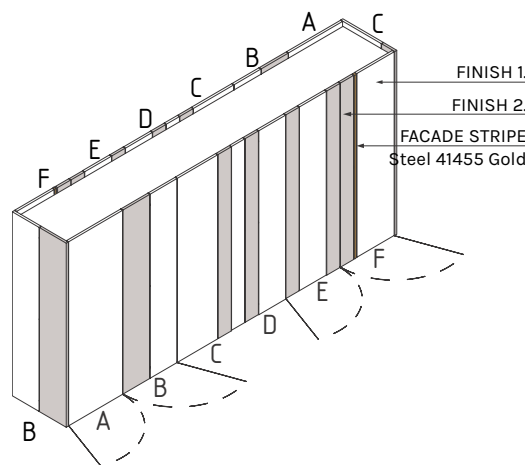
EN-FS3-A / 1230X421  
EN-FS3-B / 1230X421  
EN-FS3-C / 1230X421  
EN-FS3-D / 1230X421  
EN-FS3-E / 1230X421  
EN-FS3-F / 1230X421

V1- FINISH 1, V2 - FINISH 2



SAMPLE KIT

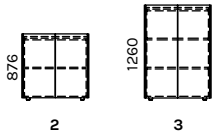
EN-3-010\_B\_ABCDEF\_C\_ABCDEF



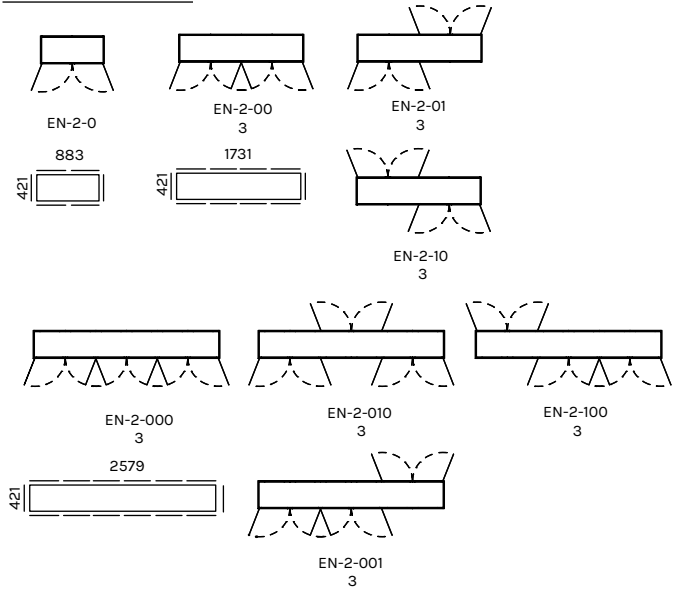


SPACE DIVIDER

2 HEIGHTS

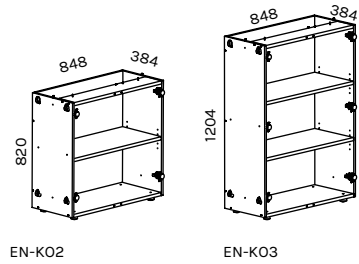


8 POSITIONS PLANS



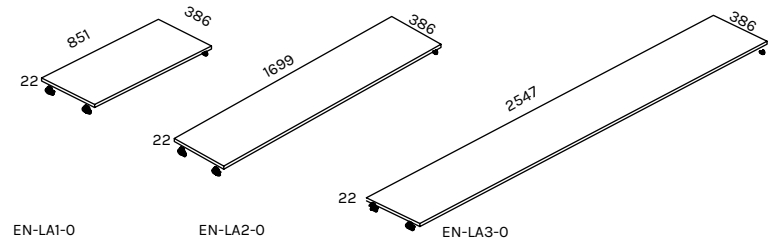
MODULE BODY

EN-K02 / 848X820  
EN-K03 / 848X1204

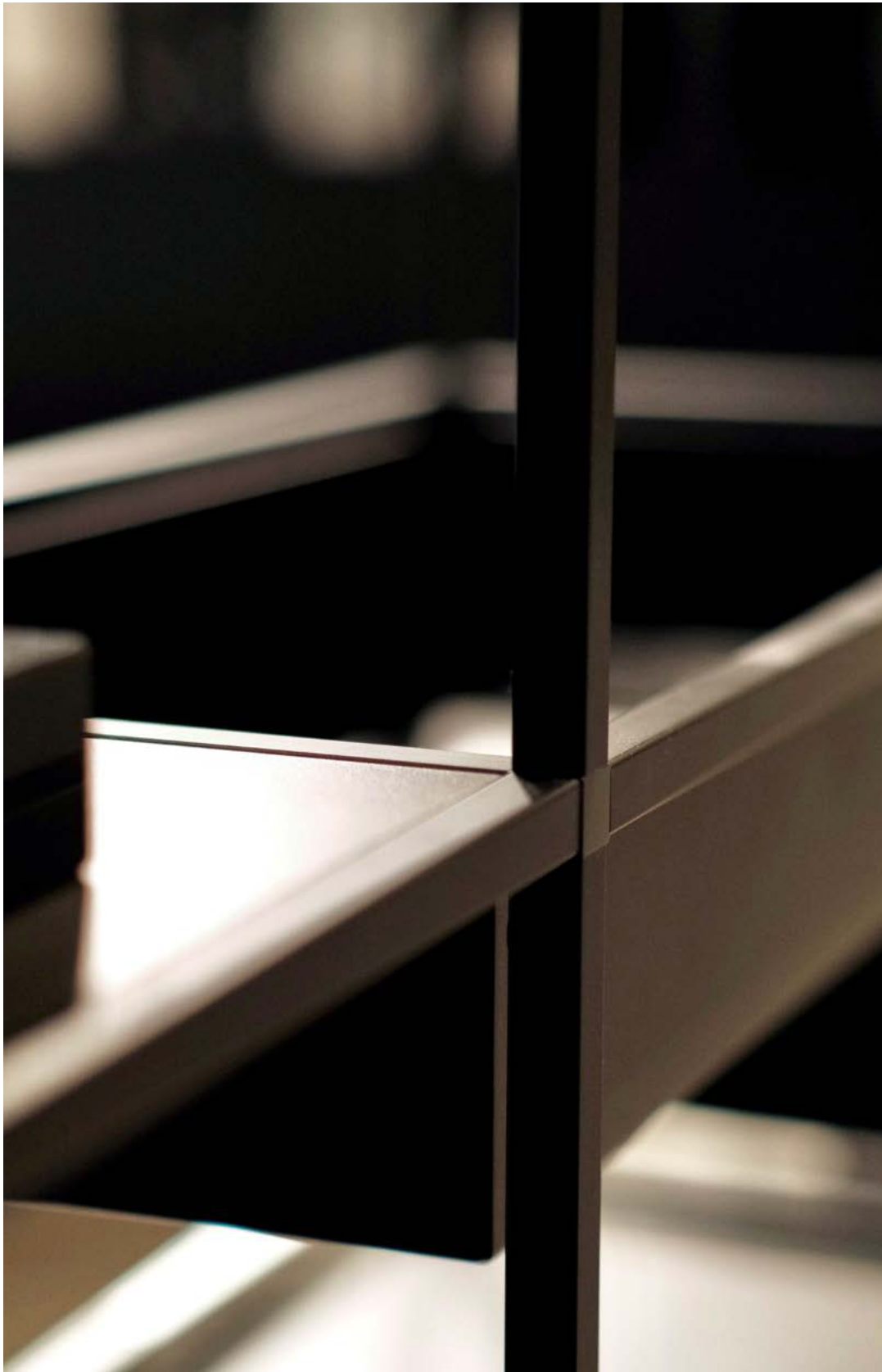


CEILING KIT

EN-LA1-0 / 851X386  
EN-LA2-0 / 1699X386  
EN-LA3-0 / 2547X386



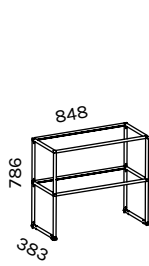




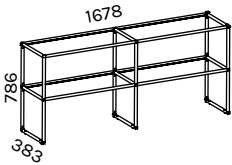
ACCESSORIES

LOW METAL RACK

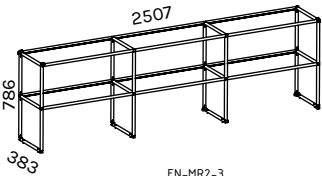
EN-MR2-1 / 848X786  
EN-MR2-2 / 1678X786  
EN-MR2-3 / 2507X786



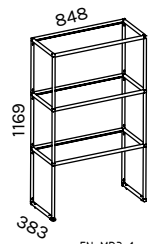
EN-MR2-1



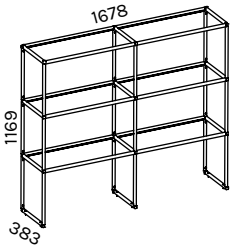
EN-MR2-2



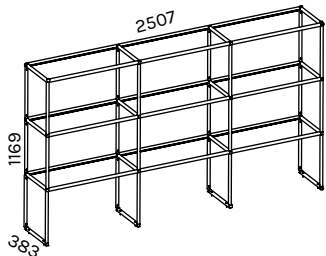
EN-MR2-3



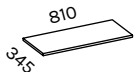
EN-MR3-1



EN-MR3-2



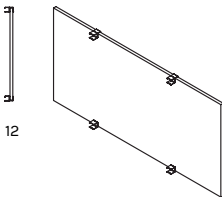
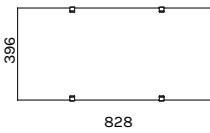
EN-MR3-3



EN-MR-R02

FELT PANEL

EN-MR-VS0804 / 828X396



FLOWER BOX

EN-MR-LK / 805X322

