





# Caro

Caro is a wonderful addition to our Avantgarde Collection. This collection offers articles with creative, modern, trendy and coloured patterns and structures. A quality which is perfect to combine with other commercial Textaafoam qualities.

This jacquard woven honeycomb structure gives an exquisite appearance. The natural colour-line with addition of a few warm deep colours, enhances the natural experience of the design.

Yarn dyed and exists out of soft chenille yarns, it's a heavy and solid quality that has proven to be durable and easy in maintenance. Machine-washable at 30 degrees\*, so also easy to keep this luxurious fabric clean and fresh. Caro is suitable for sofas, beds and chairs and will make your choice of furniture look amazing.

Bee a part of the buzzing success of Caro!

- We recommend to wash the cover inside out and immediately place the cover back to the piece of furniture, slightly damp, after washing.

***Textaafoam originals** Established in 1970, this Dutch family business brings together craftsmen in textiles and furniture design to build an unrivalled portfolio in upholstery fabrics that meets buyer's needs every time. Featuring a wide colour range, ultimate value for money and excellent reliability in the supply chain.*

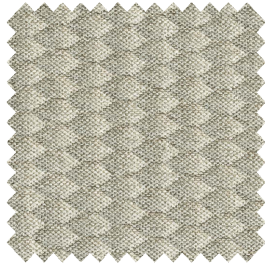
## Composition

/ faceside 72%PES 28%PP  
/ backside n/a  
/ chenille jacquard

## Suitable for

sofa's, beds, chairs with fitted and loose fitting upholstery





beige 05



blossom 166



brass 170



charcoal 79



clay 84



cognac 28



copper 126



desert 109



darkgrey 68



eucalyptus 193



forest 162



gold 132

Please note: colours may vary according to your screen settings.



herb 214



indigo 90



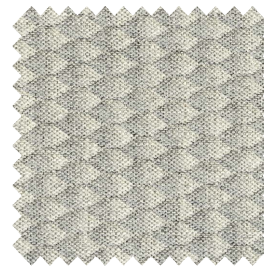
lightbrown 115



liver 10



moss 59



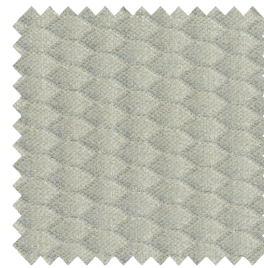
natural 01



petrol 56



sage 203



shell 196



steel 149

Please note: colours may vary according to your screen settings.

Caro - Article passport


A jacquard woven article with a honeycomb structure.

Available from stock in a wide range of contemporary and commercial colours.

Product characteristics

Productgroup	chenille jacquard	
Applications	sofa's, beds, chairs with fitted and loose fitting upholstery	
Composition faceside	72%PES 28%PP	
Composition backside	n/a	
Bonding / Coating	n/a	
Statistic code	54075300	
Dyeing method	yarn dyed	
Available colours	22	
Packaging	bubble wrap	






Durability specifications

Test	Test specification	Executed by laboratory:	Unit	Testresult		Norm RAL GZ 430/4:2019-01		Norm DIN EN 14 465:2006-09
				Dry	Wet	DGM	DGM+	
Abrasion resistance - yarn breakage	DIN EN ISO 12947-1:2007-04, DIN EN ISO 12947-2:2017-03	CTL	cycles	92.000		min. 12.000	min. 16.000	A
Pilling	DIN EN ISO 12945-2:2000-11. 2000 cycles	CTL	grade	4-5		min. 3-4	min. 4	A
Colour fastness to light	DIN EN ISO 105-BO2:2014-11. Process 3, exposure level 5							
	light colours	CTL	grade	4-5		min. 4	min.5	B-C
	middle colours	CTL	grade	4-5		min. 4	min.5	B-C
	dark colours	CTL	grade	4-5		min. 4	min.5	B-C
Colour fastness to rubbing	DIN EN ISO 105-X12:2016-11							
	light colours	CTL	grade	4-5	4-5	dry: 4, wet: 3	dry: > 4, wet: 3-4	A/A
	middle colours	CTL	grade	4-5	4-5	dry: 4, wet: 3	dry: > 4, wet: 3-4	A/A
	dark colours	CTL	grade	4-5	4-5	dry: 4, wet: 3	dry: > 4, wet: 3-4	A/A
Ignitability (cigarette test)	 BS 5852 part 1 (1979) from The Furniture and Furnishing (Fire) (Safety) regulations: 1988 No. 1324. Schedule 4 part 1 Ignition source 0: cigarette	CTL		passed				

Processing specifications

Minimum workable width in centimeters	± 141							
Roll length in meters	± 30							
Material weight in grams per linear meter	± 743							
Test	Test specification	Executed by laboratory:	Unit	Testresult		Norm RAL GZ 430/4:2019-01		Norm DIN EN 14 465:2006-09
				Warp	Weft	DGM	DGM+	
Tensile strength	DIN EN ISO 13934-1:2013-08	CTL	Newton	1.487	1.894	min. 350	min. 400	A/A
Tear growth resistance	DIN EN ISO 13937-3:2000-06	CTL	Newton	236,8	150,3	min. 25	min. 30	A/A
Resistance to seam slippage	DIN EN ISO 13936-2:2004-07. Load 180 N	CTL	mm	2,8	2,5	max. 5	max. 4	A/A
Delamination	DIN 53530:1981-02	CTL	Newton	n/a	n/a	n/a	n/a	n/a
Chemical substances	REACH	Centexbel		passed				
	Oeko-Tex, product class II	Centexbel		certified				

Cleaning specifications

Test	Test specification	Executed by laboratory:	Unit	Testresult		Norm RAL GZ 430/4:2019-01		Norm DIN EN 14 465:2006-09
				Warp	Weft	DGM	DGM+	
Dimensional change for washing 30 degrees celcius / air drying	DIN EN ISO 5077:2008-04, DIN EN ISO 6330:2013-02, DIN EN ISO 3759:2011-08	CTL	%	2,0	2,0	n/a	n/a	A/A
<div></div> <p>- We recommend to wash the cover inside out and immediately place the cover back to the piece of furniture, slightly damp, after washing.</p>								

