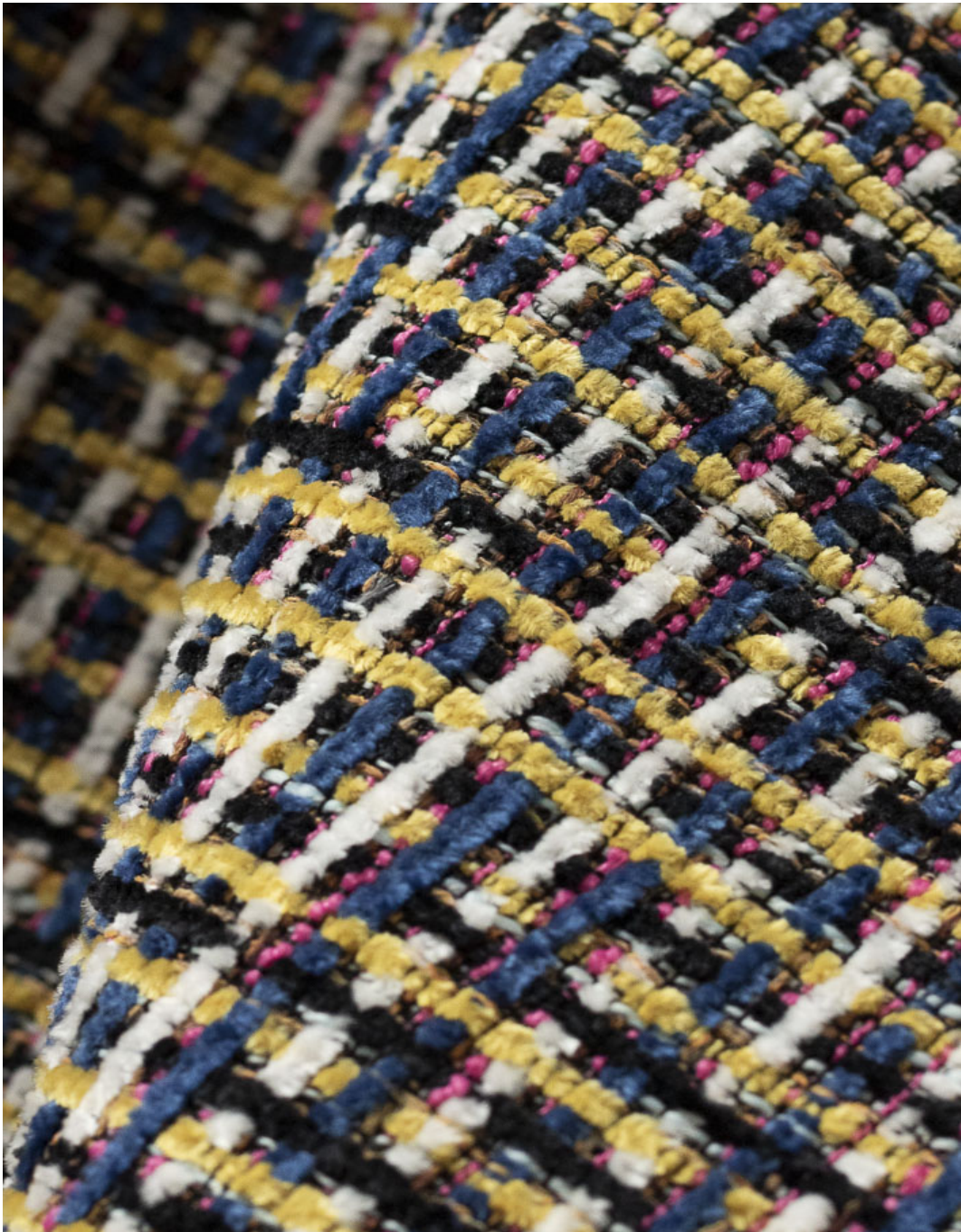




Funky



Textaafoam  | Avantgarde
creativity in fabrics



Funky

It's different! It's colourful! It's Funky! Our extravagant upholstery fabric in our Avant Garde collection. This collection offers articles with creative, trendy and coloured structures.

This unique design, from full virgin polyester chenille, is woven on a jacquard loom. The yarn dyed colours are woven in smashing colour palette, that will blow your mind.

We have chosen for a few daring colours, combined with some softer, more easy going colours. The all-over check pattern is in some colours more visible than in others.

Create your perfect combination with many of our plain commercial fabrics. On the backside a light needle punch coating provides extra stability to the fabric and makes it easy to process. It's machine-washable at 30 degrees and suitable for all types of upholstery, to create your ultimate look.

Do you have the guts to get Funky with us?

- Be careful with sharp objects, Velcro or other material that could damage the fabric.
- Hairiness may appear during usage, kindly note that this can easily be removed with a pilling machine.
- We recommend to wash the cover inside out and immediately place the cover back to the piece of furniture, slightly damp, after washing.

***Textafoam originals** Established in 1970, this Dutch family business brings together craftsmen in textiles and furniture design to build an unrivalled portfolio in upholstery fabrics that meets buyer's needs every time. Featuring a wide colour range, ultimate value for money and excellent reliability in the supply chain.*

Composition

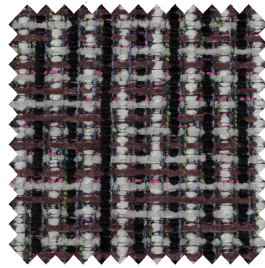
/ faceside 100%PES
/ backside n/a
/ chenille jacquard

Suitable for

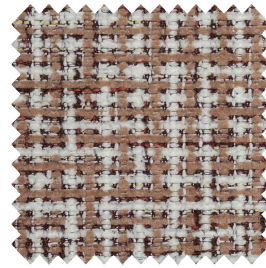
sofa's, beds, chairs with fitted and loose fitting upholstery



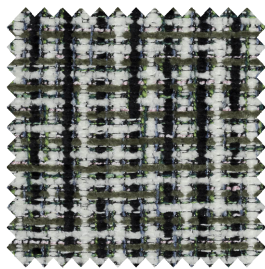
beige 05



blackberry 177



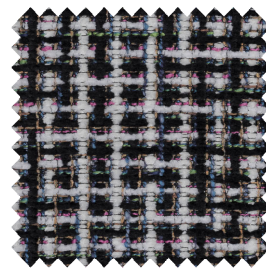
brick 128



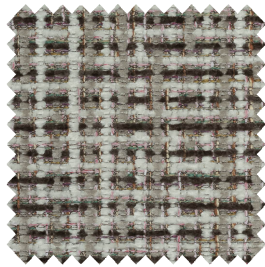
hunter 156



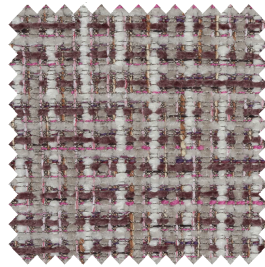
ivory 101



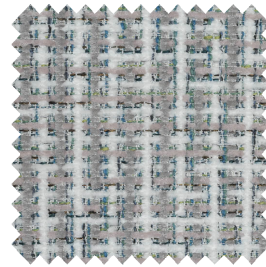
lava 165



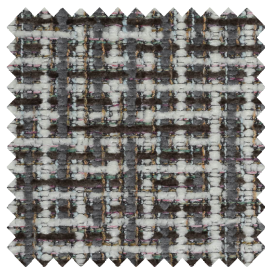
liver 10



magnolia 160



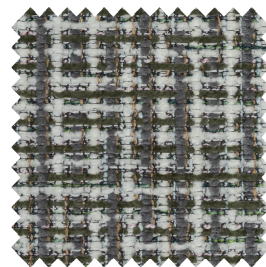
pale 200



stone 181



sun 133



turtle 88

Please note: colours may vary according to your screen settings.


Funky - Article passport

Chenille yarn dyed upholstery fabric in Funky colours.
Available from stock in a wide range of contemporary and commercial colours.

Product characteristics

Productgroup	chenille jacquard	
Applications	sofa's, beds, chairs with fitted and loose fitting upholstery	
Composition faceside	100%PES	
Composition backside	n/a	
Coating	needle punch	
Statistic code	58013600	
Dyeing method	yarn dyed	
Available colours	12	
Packaging	bubble wrap	






Durability specifications

Test	Test specification	Executed by laboratory:	Unit	Testresult		Norm RAL GZ 430/4:2019-01		Norm DIN EN 14 465:2006-09
				Dry	Wet	DGM	DGM+	
Abrasion resistance - yarn breakage	DIN EN ISO 12947-1:2007-04, DIN EN ISO 12947-2:2017-03	CTL	cycles	70.000		min. 8.000	min. 16.000	B
Pilling	DIN EN ISO 12945-2:2000-11. 2000 cycles	CTL	grade	4-5		min. 3-4	min. 4	A
Colour fastness to light	DIN EN ISO 105-BO2:2014-11. Process 3, exposure level 5							
	light colours	CTL	grade	5		min. 4	min.5	A
	middle colours	CTL	grade	5		min. 4	min.5	A
	dark colours	CTL	grade	5		min. 4	min.5	A
Colour fastness to rubbing	DIN EN ISO 105-X12:2016-11							
	light colours	CTL	grade	5	5	dry: 4, wet: 3	dry: > 4, wet: 3-4	A/A
	middle colours	CTL	grade	4-5	4-5	dry: 4, wet: 3	dry: > 4, wet: 3-4	A/A
	dark colours	CTL	grade	4	4-5	dry: 4, wet: 3	dry: > 4, wet: 3-4	A/A
gnitability (cigarette test)	 BS 5852 part 1 (1979) from The Furniture and Furnishing (Fire) (Safety) regulations: 1988 No. 1324. Schedule 4 part 1 Ignition source 0: cigarette	CTL		passed				

Processing specifications

Minimum workable width in centimeters	± 138							
Roll length in meters	± 35							
Material weight in grams per linear meter	± 630							
Test	Test specification	Executed by laboratory:	Unit	Testresult		Norm RAL GZ 430/4:2019-01		Norm DIN EN 14 465:2006-09
				Warp	Weft	DGM	DGM+	
Tensile strength	DIN EN ISO 13934-1:2013-08	CTL	Newton	2.157	1.182	min. 350	min. 400	A/A
Tear growth resistance	DIN EN ISO 13937-3:2000-06	CTL	Newton	131,9	228,2	min. 25	min. 30	A/A
Resistance to seam slippage	DIN EN ISO 13936-2:2004-07. Load 180 N	CTL	mm	2,0	2,0	max. 5	max. 4	A/A
Delamination	DIN 53530:1981-02	CTL	Newton	n/a	n/a	n/a	n/a	n/a
Chemical substances	REACH	Centexbel		passed				
	Oeko-Tex, product class II	Centexbel		certified				

Cleaning specifications

Test	Test specification	Executed by laboratory:	Unit	Testresult		Norm RAL GZ 430/4:2019-01		Norm DIN EN 14 465:2006-09
				Warp	Weft	DGM	DGM+	
Dimensional change for washing 30 degrees celcius / air drying	DIN EN ISO 5077:2008-04, DIN EN ISO 6330:2013-02, DIN EN ISO 3759:2011-08	CTL	%	0,0	-0,4	n/a	n/a	A/A
<div></div> <p>- We recommend to wash the cover inside out and immediately place the cover back to the piece of furniture, slightly damp, after washing.</p>								



Textaafoam
creativity in fabrics

Textaafoam b.v.
La Défense 11 | 5026 SC Tilburg
P.O. Box 12 | 5050 AA Goirle
The Netherlands

T +31(0)13 534 5934
F +31(0)13 534 7586
E info@textaafoam.nl
www.textaafoam.nl