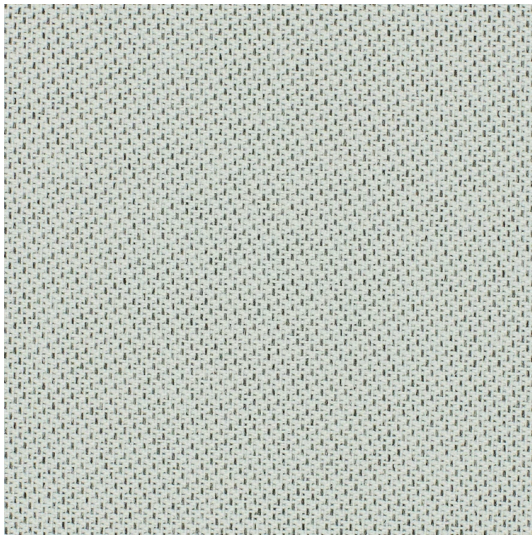


# TONAL

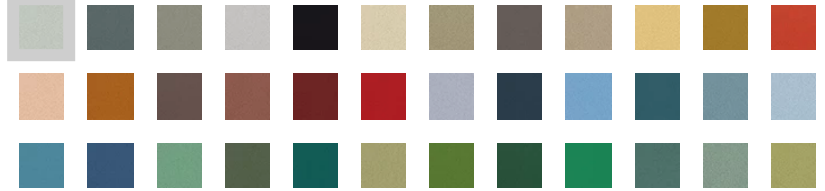
## COLOUR 2490-66284

Please be aware that the colour shades can appear different from the real fabric colours. We advise you to request actual fabric samples before ordering.



## COLOUR SCALE

Design no. 2490 Tonal (140 cm/55") is available in 36 colours



Design no. 2495 Tonal (170 cm/67") is available in 15 colours



Tonal is made from 100% recycled post-consumer polyester and with the addition of 11 new colours (2024), Tonal now provides an even broader palette, designed to meet demands for lighter, neutral tones that fit seamlessly into a variety of interior styles. Its cross-functional design makes it the perfect fabric for both seating and screens, offering a cohesive look across different applications. Additionally, the fabric's multi-dimensional texture adds visual depth, balancing simplicity with subtle sophistication, making it both engaging and functional. Specified colours in width 140 cm/55" can also be produced in 170 cm/67". Please contact customer service for more information.

100% recyclable polyester

Meets Möbelfakta requirements

Design and colours are developed by Cenk Kivrikoglu

### ORDER

Please sign in to order fabrics and samples.



## PRODUCT SPECIFICATIONS

 CHARACTERISTICS

PERFORMANCE

**Design no.**

2490 / 2495 – Tonal

**Application**

Upholstery

Panel

Screen

**Composition**

100% Post-consumer recycled polyester

**Weight**

2490: 315 g/lm – 10.16 oz/lin.yd

2495: 385 g/lm – 12.42 oz/lin.yd

**Width**

2490: 140 cm – 55 inches

2495: 170 cm – 67 inches

**ENVIRONMENT****Environment, health, and safety**OEKO-TEX® STANDARD 100EU Ecolabel

Meets Möbelfakta requirements

**VOC emission**Ansi/Bifma VOC test M7.1**Potential environmental impacts**Environmental Product Declaration (EPD)**Abrasion**

100,000 – rubs martindale (EN ISO 12947-2)

100,000 – double rubs wyzenbeek (ASTM D4157) (heavy duty upholstery)

**Pilling**

4-5 – scale 1-5, max. 5 (EN ISO 12945-2)

**Light fastness**

6-8 – scale 1-8, max. 8 (EN ISO 105-B02)

**Rubbing fastness dry/wet**

4-5/4-5 – scale 1-5, max. 5 (EN ISO 105x12)

**Flammability**BS EN 1021-1 CigaretteBS EN 1021-2 MatchBS 476 Part 7 class 1DIN EN 13501-1 B-s1,d0(glued)CA TB 117-2013ASTM E 84 Class 1(Adhered)ASTM E 84 Class 1(Unadhered)BS 5852 Crib 5 (option flame retardant)

Will also pass other flammability standards. Flame retardant performance is dependent upon the foam used. Contains no flame retardant chemicals.

**US ACT pass** ASTM D4157-07 Wyz abrasion (heavy duty) 100k ASTM D3511 Pilling AATCC 16 Light fastness AATCC 16 Light fastness AATCC 8 or 116 Dry/wet crocking AATCC 8 or 116 Dry/wet crocking CA TB 117-2013 ASTM E 84 Class 1(Adhered) ASTM E 84 Class 1(Unadhered)

Abrasion test results exceeding ACT Performance Guidelines are not an indicator of product lifespan. Multiple factors affect fabric durability and appearance retention.

**CERTIFICATES**

## ACOUSTIC TEST AIR FLOW RESISTANCE

Test	Condition	No.	Date	Download
EN 29053 & ISO 9053-1 (airflow resistance)		M104146/49	07 Mar 2019	<a href="#">PDF</a>

## ABRASION RESISTANCE

Test	Condition	No.	Date	Download
BS EN ISO 12947-2/14465	In accordance with EN 14465	144420811	08 Aug 2025	<a href="#">PDF</a>
ASTM D4157-07 Wyz abrasion (heavy duty) 100k		25-001499	05 Jun 2025	<a href="#">PDF</a>

## PILLING

Test	Condition	No.	Date	Download
BS EN ISO 12945-2		144420811	29 Jul 2025	<a href="#">PDF</a>
ASTM D3511 Pilling		25-001499	05 Jun 2025	<a href="#">PDF</a>

## COLOUR FASTNESS TO LIGHT

Test	Condition	No.	Date	Download
BS EN ISO 105 B02 Method 2		99431	09 Jul 2018	<a href="#">PDF</a>
BS EN ISO 105 B02 Method 2		2024AN1322	19 Jun 2024	<a href="#">PDF</a>
AATCC 16 Light fastness		3-25914-0	16 May 2018	<a href="#">PDF</a>
AATCC 16 Light fastness		2024AN1322	19 Jun 2024	<a href="#">PDF</a>

## DRY AND WET RUBBING/CROCKING

Test	Condition	No.	Date	Download
BS EN ISO 105-X12 Rubbing dry/wet		99431	09 Jul 2018	<a href="#">PDF</a>
BS EN ISO 105-X12 Rubbing dry/wet		2024AN1590	04 Jul 2024	<a href="#">PDF</a>
AATCC 8 or 116 Dry/wet crocking		3-25911-1	09 May 2018	<a href="#">PDF</a>

## ACOUSTIC TEST AIR FLOW RESISTANCE

AATCC 8 or 116 Dry/wet crocking		2024AN1590	04 Jul 2024	<a href="#">PDF</a>
---------------------------------	--	------------	----------------	---------------------

## SEAM SLIPPAGE

Test	Condition	No.	Date	Download
ASTM D4034 Yarn slippage at a sewn seam		3-25917-4	09 May 2018	<a href="#">PDF</a>
BS EN ISO 13936-2		98179	11 Jun 2018	<a href="#">PDF</a>

## BREAKING FORCE

Test	Condition	No.	Date	Download
ASTM D5034 Breaking force		3-25917-5	09 May 2018	<a href="#">PDF</a>

## COLOUR FASTNESS TO PERSPIRATION

Test	Condition	No.	Date	Download
AATCC 15 Perspiration		3-25917-8	08 May 2018	<a href="#">PDF</a>
BS EN ISO 105-E04		98174-02	11 Jun 2018	<a href="#">PDF</a>

## FLAMMABILITY

Test	Condition	No.	Date	Download
BS EN 1021-1 Cigarette	20-22 kg/m3 non-fire retardant polyurethane foam	23/63236N/06/25	27 Jun 2025	<a href="#">PDF</a>
BS EN 1021-2 Match	35 kg/m3 CMHR foam	23/63236N/06/25	27 Jun 2025	<a href="#">PDF</a>
BS 476 Part 7 class 1		98174-03	08 Jun 2018	<a href="#">PDF</a>
DIN EN 13501-1 B-s1,d0(glued)		21AN1352	25 Jun 2021	<a href="#">PDF</a>
CA TB 117-2013		25-001499	05 Jun 2025	<a href="#">PDF</a>
ASTM E 84 Class 1(Adhered)	Adhered	24-002140	01 Oct 2024	<a href="#">PDF</a>
ASTM E 84 Class 1(Unadhered)	Unadhered	3-25917-1	10 May 2018	<a href="#">PDF</a>

## ACOUSTIC TEST AIR FLOW RESISTANCE

---

### FLAMMABILITY WITH FLAMERETARDANT TREATMENT

Test	Condition	No.	Date	Download
BS 5852 Crib 5 (option flame retardant)	35 kg/m <sup>3</sup> CMHR foam	23/61362Q/09/23	11 Dec 2024	<a href="#">PDF</a>

### WASH STABILITY

Test	Condition	No.	Date	Download
BS EN ISO 6330 6M 60 C PC Flat dry	Dimensional Stability to Washing at 60dg.C	98174-02	11 Jun 2018	<a href="#">PDF</a>

### VOC EMISSION

Test	Condition	No.	Date	Download
Ansi/Bifma VOC test M7.1		392-2025-00484401	09 Oct 2025	<a href="#">PDF</a>

### RESISTANCE TO BLEACH CLEANING

Test	Condition	No.	Date	Download
Internal test according BIFMA HCF 8.1 and ACT Method 1	1:10 Sodium Hypochlorite 5,25-6,25%		12 Jul 2024	<a href="#">PDF</a>
Internal test according BIFMA HCF 8.1 and ACT Method 1	1:10 Sodium Hypochlorite 5,25-6,25%		05 Oct 2020	<a href="#">PDF</a>

### MATERIAL SAFETY DATA SHEET

Test	Condition	No.	Date	Download
Material Safety Data Sheet			30 Sep 2021	<a href="#">PDF</a>

### POTENTIAL ENVIRONMENTAL IMPACTS

Test	Condition	No.	Date	Download
Environmental Product Declaration (EPD)			23 Jul 2025	<a href="#">PDF</a>

## CARE & MAINTENANCE

Wash or dry cleaning P(W).

Tonal is made of polyester which is a material suited for environments with special requirements for cleaning.

Click here for guidance relating to disinfection. [Link to Stain Guide...](#)



60°C shrinkage max 3.5%

---